

# DrawingBoard VI™

## LARGE-FORMAT DIGITIZERS & GRAPHIC TABLETS

Designed for demanding CAD, GIS, engineering, textile and apparel applications, the DrawingBoard VI series is the design professional's choice in large-format digitizers and graphic tablets. DrawingBoard VI systems now feature integrated USB and RS-232 Serial connections. When connected via USB, no power supply is required simplifying setup and operation.



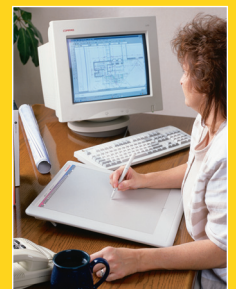
DrawingBoard VI digitizers utilize the same Advanced Function Technology that has set the world standard for performance. Internally, these high performance tools are engineered with a state-of-the-art positioning grid to ensure reliability, performance and quality. Multiple accuracy versions are available to match specific system requirements and an integrated mounting channel allows accessories, such as a pen tray, to be easily and quickly mounted.

DrawingBoard VI digitizers also work with a variety of cursors and stylus pens. Each pointing device offers a number of programmable buttons. By assigning specific program functions to these buttons, you'll increase efficiency and improve production times.



Drawing Board VI small-format digitizers feature a recessed menu area, and a clear overlay that holds templates and menus in place. When used with a menu, these tablets significantly enhance user productivity by consolidating multiple mouse selections into a single point-and-click action.

DrawingBoard VI tablets and digitizers offer unparalleled features and performance no matter what your application.



## FEATURES

### **Industry's highest resolution and accuracy** **Large Format Digitizers**

- Resolution up to 12,700 lines per inch
- Accuracy levels offered:  
±0.010", ±0.005", ±0.002"

### **Graphic Tablets**

- Resolution up to 2,540 lines per inch
- Accuracy up to ±0.010 inches

### **Choice of pointing devices**

- Cordless or corded 16-button cursor
- Cordless or corded click tip pen with two side buttons
- Cordless light touch pen with two side buttons
- Cordless pressure pen with two side buttons
- Illuminated 16-button cursor with high-accuracy digitizers

### **Convenience features**

- Easy-to-install software
- Powered via USB connection which simplifies setup
- Integrated USB and RS-232 serial connections  
(RS-232 Serial requires optional power supply)

### **Software drivers**

- Wide range of compatibility
- Programmable macros (RS-232 only)

**GTCO CalComp**  
PERIPHERALS

# DrawingBoard VI™

## LARGE-FORMAT DIGITIZERS & GRAPHIC TABLETS

<b>Platform Support</b>	PC
<b>Software Drivers</b>	Microsoft Windows 95, 98, ME, NT, 2000, XP
<b>Hardware Interface</b>	USB, RS-232 Serial (Requires optional Power Supply)
<b>Absolute Accuracy</b>	Accuracy Options: Large Format Systems ±0.002 in / ±0.051 mm ±0.005 in / ±0.127 mm ±0.010 in / ±0.254 mm Graphics Tablets (12x12 & 12x18) ±0.010 in / ±0.254 mm (Standard)
<b>Resolution</b>	Up to 12,700 lines per inch/500 lines per mm real resolution
<b>Repeatability</b>	1 LSB (least significant bit)
<b>Proximity</b>	>0.4 in / 10.2 mm, cordless >0.8 in / 20.3 mm, corded
<b>Self Diagnostics</b>	Automatic testing RAM, ROM and microprocessor
<b>Baud Rate</b>	Up to 38,400
<b>Data Rate</b>	Up to 200 coordinate pairs per second
<b>Technology</b>	Electromagnetic
<b>Output Formats</b>	32 industry-standard formats
<b>Cursor Switches</b>	Elastomeric keypad, rated life over 1 million actuations
<b>Emulations</b>	CalComp 3400, GTCO T5A, Summagraphics Microgrid
<b>Operating Modes</b>	Point, line, run, track, incremental, prompt
<b>Power Supply</b>	120 V/60 Hz, 220 V/50 Hz (required for RS-232 serial connection) No supply required for USB connection
<b>Power Requirements</b>	5 Volts, DC, 100 mA current draw (USB) 9 Volts, DC, 200 mA current draw (with Power Supply)
<b>Certification</b>	UL 1950, EN60950, FCC, VCCI, CE, EN55024, EN55022, Industry Canada
<b>Operating Temperature</b>	41 to 115°F/5 to 46°C
<b>Storage Temperature</b>	0 to +150°F/-18 to +68°C
<b>Humidity Range</b>	10 to 95%, noncondensing
<b>Altitude Range</b>	0 to 10,000 ft/0 to 3,077 m
<b>Warranty</b>	One-year limited warranty

### Digitizer Options and Physical Dimensions

Model	Active Area	Footprint	Weight	Average Shipping Weight
DB6-2024	20 x 24 in/508 x 609.6 mm	29 x 34 in/737 x 864 mm	13 lbs/5.9 kg	31 lbs/17.7 kg
DB6-2436	24 x 36 in/609.6 x 914.4 mm	32.5 x 46 in/826 x 1,168 mm	19 lbs/8.6 kg	48 lbs/21.8 kg
DB6-3648	36 x 48 in/914.4 x 1,219.2 mm	44.5 x 60 in/1,130 x 1,524 mm	30 lbs/13.6 kg	79 lbs/35.9 kg
DB6-4460	44 x 60 in/1,117.6 x 1,524 mm	52.5 x 69 in/1,333 x 1,753 mm	40 lbs/18.2 kg	89 lbs/40.5 kg

### Tablet Options and Physical Dimensions

Model	Active Area	Width	Depth	Height (front)	Height (back)	Weight
DB6-1212	12 x 12 in/305 x 305 mm	14.6 in/371 mm	15.9 in/404 mm	.7 in/17.8 mm	1.7 in/43.2 mm	4.1 lb/1.9 kg
DB6-1218	12 x 18 in/305 x 457 mm	20.7 in/525.8 mm	15.9 in/404 mm	.7 in/17.8 mm	1.7 in/43.2 mm	9.5 lb/4.3 kg

### Distributed by:

#### Western US Office

8224 East Evans Road  
Scottsdale, AZ 85260

Voice 480.948.6540 ■ Fax 480.948.5508

Toll Free USA 800.856.0732

#### European Headquarters

GTCO CalComp GmbH  
Kreiller Strasse 24

81673 Munich ■ Germany

Voice +49.89.370012.0 ■ Fax +49.89.370012.12



### Included With Your Purchase

- DrawingBoard VI digitizer or graphic tablet
- Corded or cordless transducer (Specify at time of purchase)
- USB Cable
- CD ROM with Windows Drivers and user's manual
- Mounting brackets for digitizer (except model 2024)
- Pen/cursor tray for digitizer

### Transducer Options

- 16-button cursor, corded or cordless
- 4-button cursor, corded or cordless
- Click tip pen, corded or cordless
- Pressure tip pen, cordless
- 16-button illuminated cursor for high-accuracy digitizers, corded
- Lite Touch pen, cordless

### Other Options for Large Format Digitizers

- Clear overlay
- Manual lift/manual tilt pedestal
- Magnifier lens for high-accuracy cursor
- RS-232 Serial Kit (Power Supply and Cable)

## GTCO CalComp

PERIPHERALS

### Corporate/Sales Office

7125 Riverwood Drive ■ Columbia, MD 21046

Voice 410.381.6688 ■ Fax 410.290.9065

Toll Free USA, Canada 800.344.4723

E-mail sales@gtcocalcomp.com

www.gtcocalcomp.com

Continuing research and development may result in specification or appearance changes at any time.

DrawingBoard is a registered trademark of GTCO CalComp Inc. All other product names are trademarks or registered trademarks of their respective owners.

Order No. DB6-10/06 Printed in U.S.A.

©2006 GTCO CalComp Inc. All rights reserved.